

invenis  
Eurotherm

# 6000

Series Data Management



imagine making the  
impossible possible

# 6000 Series Data Management

With our range of recorders and software, your data is stored very easily, but **imagine absolute data records forever...** We can securely archive your vital data to multiple locations with flexible reporting enabling you to retrieve information when and where you need it. Add to this, an absolute commitment to technological innovation, constant reinvestment in research and development, and a team of engineering oriented salesmen who understand your process requirements; we can and do **imagine** making the impossible possible for our customers.

## EASY

# Easy to install, Easy to configure, Easy to use ...

The features and functions of this innovative range have been designed with 'ease of use' in mind. Taking advantage of the latest technologies while maintaining a secure environment, the 6000 Series feels familiar and is easy to use.



### Brightness and Clarity

High screen definition always ensures maximum clarity as the 6000 Series uses state of the art digital TFT display technology. A separate display processor always optimises screen refresh rates to ensure 'Operator' efficient viewing of all screens.

- High resolution XGA display
- Digital display technology
- Bright and sharp images
- 16-bit colour
- 8 Hz trend speed update

### Touch Screen Display

The 6000 Series HMI is easy and intuitive to use ensuring faster productivity and minimal learning requirements. It also incorporates a 'Pop Up' full 'QWERTY' keyboard to facilitate easy data or message entry.

- No complicated button presses
- Create operator buttons anywhere on display
- Intuitive drop-down menus
- Consistent navigation
- Pre-defined 'Soft' keys
- Integral stylus for 6100A and 6180A

imagine absolute data  
records forever

invenys  
**Eurotherm**

### Easy fit to your process

The 6000 Series fits a wide spectrum of applications by offering fully featured software options and flexible I/O, which can be added to at any time. A unique 'trial mode' feature removes the constraints of the purchased options, allowing you to simply 'try before you buy'.

- Extensive maths, totalisers, counters, timers, groups, log scales, batch
- Multiple views - standard and custom
- Up to 48 input channels
- Up to 27 relays and 24 event inputs
- Compact Flash or USB memory card

### Built-in Data Protection and Traceability

Your most valuable asset is the data collected for process and legislation purposes. The 6000 Series offers the 'best in class' security environment so you can be sure that your data is protected and secure.

- Electronic lockable media flap on 6100A and 6180A
- Audit Trail for 21CFR Part 11 and Nadcap
- Unlimited, unique user names and passwords
- Recorded login
- Multiple archiving strategies
- Selectable internal Flash memory size  
- up to 96Mb for history (12 million samples)  
in 6100A and 6180A



### Easy Communications

Communications flexibility is the cornerstone of solutions in today's challenging Global market, where data is required to be communicated locally and/or globally. The 6000 Series meets these challenges by offering a wide range of communications options.

- 10/100baseT auto-sensing Ethernet as standard
- 6100A/6180A uses 2 serial ports - 232/422/485
- 6100XIO/6180XIO uses 2 serial ports - 422/485
- Modbus TCP and RTU master and slave
- FTP client and server
- EtherNet/IP server
- DHCP, BootP or fixed IP addressing
- SNTP client and server
- Remote viewing, operation and configuration
- Remote software upgrade
- Centralised security using Security Manager

### Local Printing

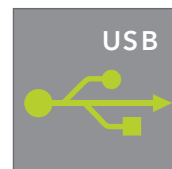
Locating a 'local' printer to the 'job' or work in progress can sometimes be a primary criteria. This requirement is met by the 6100A and 6180A in an easy to configure manner.



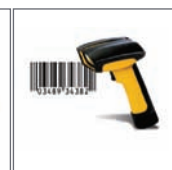
- Local serial ticket printer for batch/event reporting

### USB 'Plug and Play'

'Plug and Play' peripherals allow the 6000 Series to be connected in an easy and familiar manner so you can configure and operate the 6000 Series based on specific application requirements.



- Keyboard
- Mouse
- Memory Stick
- Bar code scanner

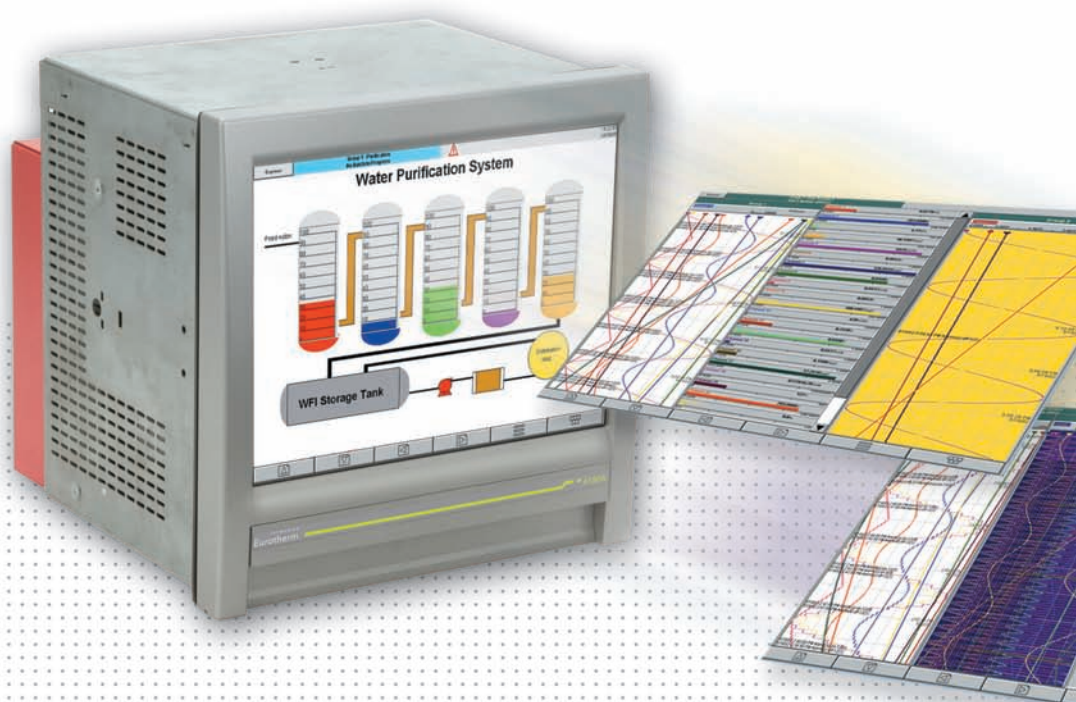




# SECURE

## Your data has value and we can give you peace of mind ...

Security is an integral part of the 6000 Series. Data logging, data archiving and user access are all designed to give you peace of mind while still providing 'ease of use'. Process data and Metadata values are continually logged to the large, internal, non-volatile FLASH memory. Records are stored in a secure, binary, check summed format to protect data integrity.



### User Access Controls

Access to the 6000 instruments are controlled using an unlimited amount of unique user names and passwords. Each user can be set up with specific access rights - this not only ensures users only get access to the areas they need, it also simplifies operation as dynamic menus show only items the user can access.

### Complete Traceability...

6000 has an Audit Trail and Recorded Login facility. Every time a user logs on, completes an operation or makes a change to the configuration this is recorded.

The Audit Trail is time-stamped and incorporates the operator details along with the changes made. It is stored with the process data and cannot be modified or removed.

### Security Manager

Security Manager offers significant operation cost savings and ease of use by providing maintenance of user accounts and passwords from one or multiple locations. If a user needs to change their password they can do so on a local instrument or PC and this will be automatically distributed across all systems to which they have access.

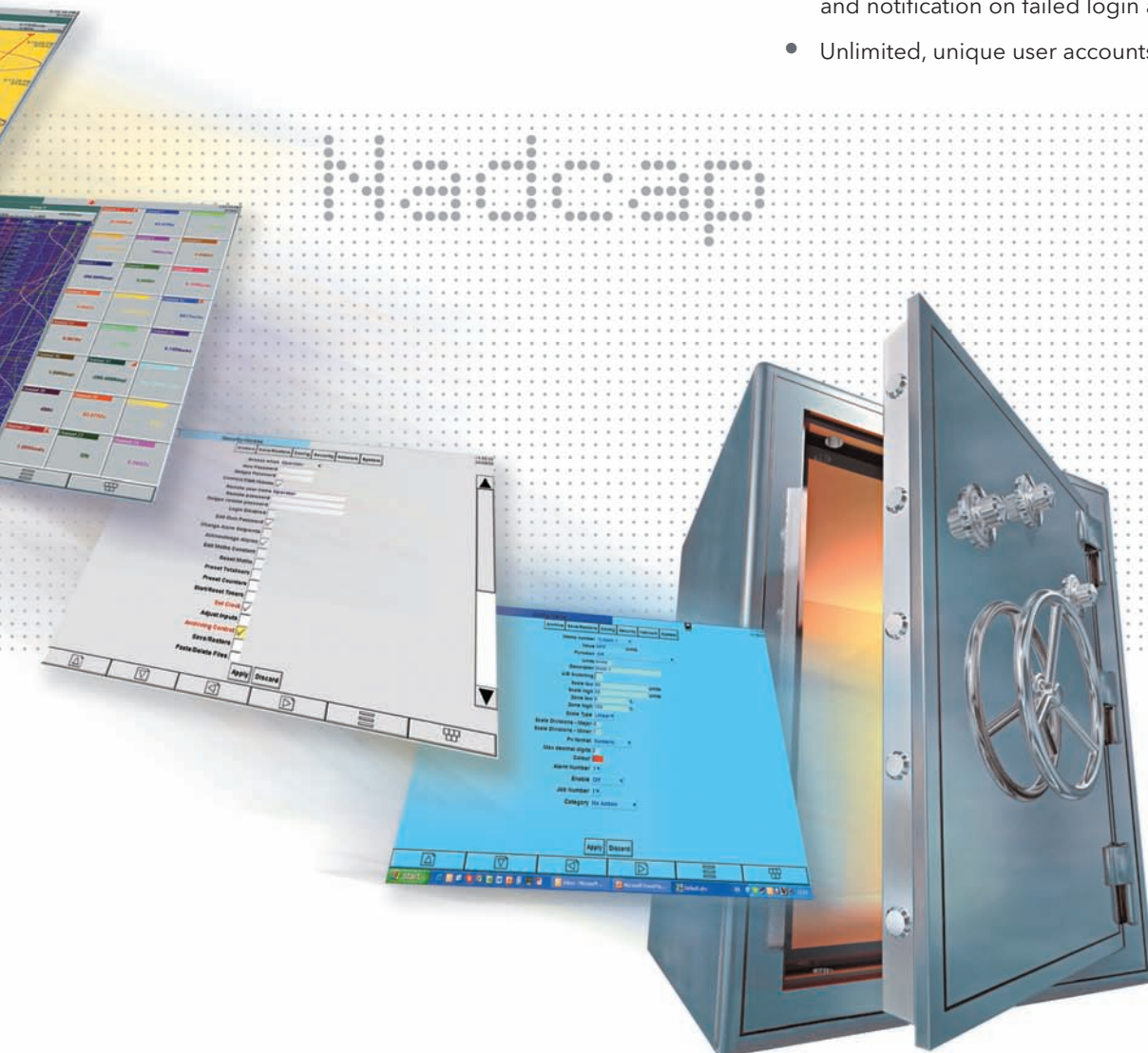
### Active Directory

Active Directory is a Microsoft® utility intended for User Access Administration of PCs. It is a tool used by the IT administrators to manage user access across the company wide network. It allows users to be given access according to their functions by allocating them to a group with defined privileges. It also includes the necessary features such as password expiry, auto-logout, minimum length password, etc. It allows the users to manage their password from any node on the system.

### Electronic Signatures

The 6000 Series support Electronic Signatures in accordance with 21 CFR Part 11. All user actions can be configured to require signing or signing and authorisation. The ability to sign or authorise is configured on a user by user basis and incorporates signature element controls. Unique users are ensured by retiring and not deleting accounts.

- Electronic signing and authorisation
- User specific access according to authority level
- Signature element controls - password expiry, minimum password length, automatic log-off, automatic disabling and notification on failed login attempts
- Unlimited, unique user accounts and passwords

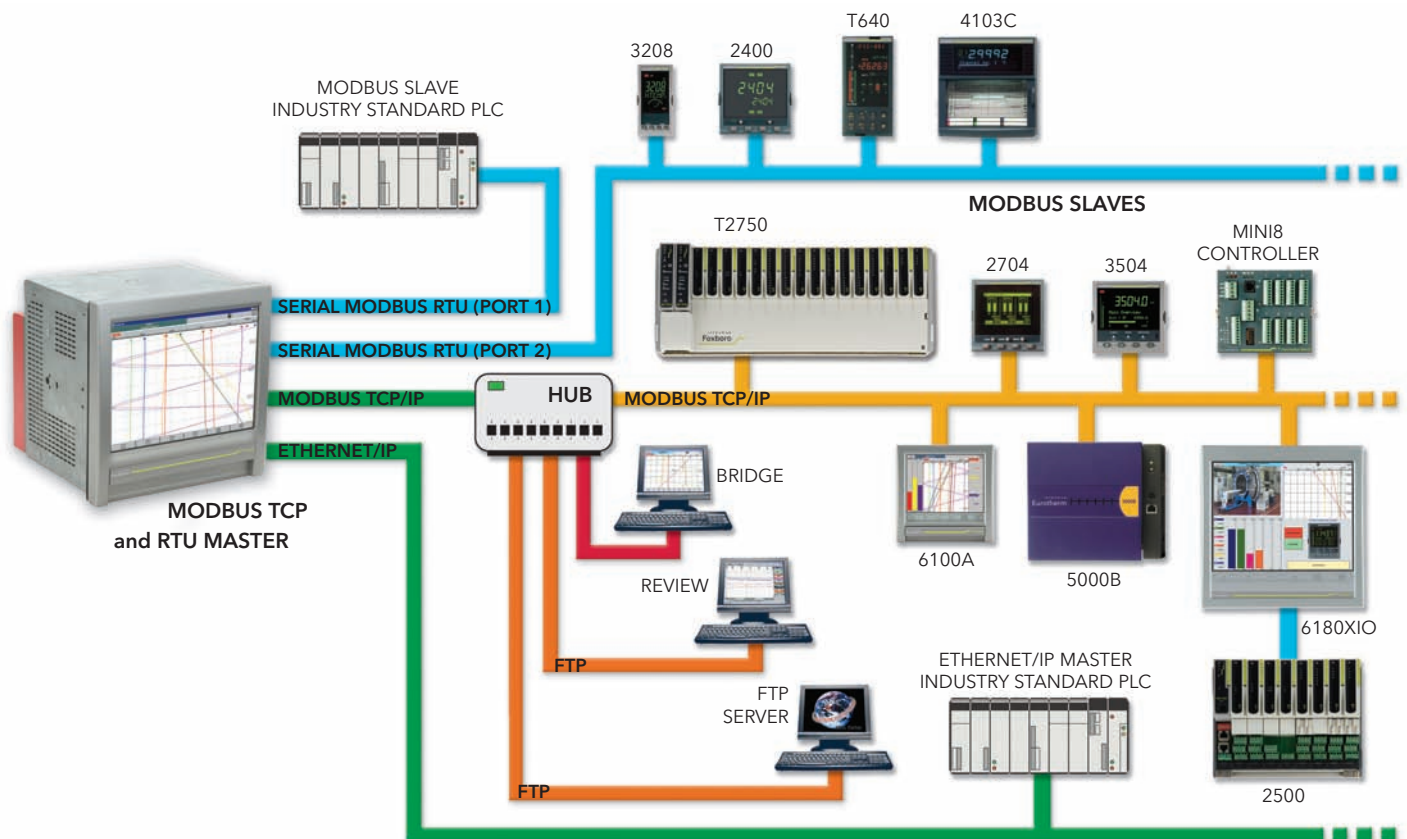


# ADAPTABLE

## Adaptable features, flexible solutions ... more than a box

The 6000 Series offers much more than just secure data recording. They provide many options that can be used in stand alone applications or can be easily integrated into a wider system.

Adaptable functionality incorporated in the 6000 instruments will meet the most demanding of solution requirements. With their ease of use and configuration, you can be sure to maximise your return on investment.



### Communications Made Easy

The 6000 Series can be a Modbus Master and Slave over both Serial and Ethernet connections at the same time. Slave devices can be connected to any of the ports and data recorded and made available to supervisory systems over the Ethernet network. Custom screens can be easily created to give the operator the best view of the process and easier operation of connected devices via the touch screen display.

- 10/100baseT Ethernet
- EtherNet/IP Server
- Modbus master and slave
- Dynamic Host Configuration Protocol (DHCP)
- Alarm/event notification via email/SMS
- Remote viewing, operation and configuration
- Automatic printing functionality
- Up to 12 independent Groups (effectively 12 recorders in one box)
- Adaptive recording to store max and min values at 8Hz- even at slower recording rates
- Simple reporting



# Success stories commercial benefits

inven·sys  
Eurotherm

## Case Study

### Helping manage air quality in the Austrian Tyrol



Invensys Eurotherm have been supplying environmental measurement solutions for air quality and forest protection to the Government department responsible for the Austrian Tyrol since 2004.

#### Customer Challenge

To reduce CO<sub>2</sub> emissions by 50%

#### Solution

- 6180A graphic recorder
- Bridge remote access software
- Review and Review QuickChart secure data storage and viewing

#### Customer Benefits

- A sophisticated solution that outstrips our competitors
- Out of 24 mobile environment measurement stations in the Tyrol most are equipped with our 6180A graphic recorder
- With this solution the Tyrol Government are able to fully and accurately collect and manage air quality environmental data across the entire region helping to meet their high targets for CO<sub>2</sub> emission reduction

## Case Study

### Unique benefits for crucial healthcare instrument disinfection



Our control and monitoring 6100A Chart Recorder, collects and verifies data to prove that all disinfection processes are 100 percent accurate and complete.

#### Customer Challenge

Our customer, a leading manufacturer in the field of Endoscope, Laboratory and Surgical Instrument Decontamination equipment wanted to improve their monitoring capabilities for decontamination of equipment. Improved monitoring ultimately reduces the number of illnesses and deaths.

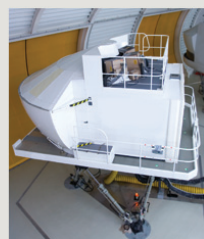
#### Solution

- Invensys Eurotherm 6100A chart recorder data monitoring solution
- T2550 PAC utilising endoscope Patency control with independent data verification from the 6100A recorder

#### Customer Benefits

- Unique solution to the healthcare industry
- Data verification - independent from the washer disinfectant microprocessor
- Satisfies current and future drafted global regulations for monitoring, detailed traceability and validation

### Aviation Industry - superb integration with current systems and accreditation preparation



With our approach to information management and control, Eurotherm improves operating efficiency processes for Nadcap accreditation for a leading design company in aircraft training equipment.

#### Customer Challenge

Improve operating efficiency and remove as much paperwork as possible to reduce source errors, in accordance with Nadcap accreditation requirements.

#### Solution

- 6000 series recorders with Invensys Operations Management SCADA solution
- Created a bespoke custom database, integrated with existing process plant
- Single point of storage for process information

#### Customer Benefits

- No disruption to proven process operation
- Additional recorder instruments provide security and process audit capabilities: Vital for Nadcap accreditation
- Progressive implementation to manage costs
- Better quality information means improved productivity and faster return on investment
- These combined savings serve to reduce overheads and increase profit

## Case Study

For the full stories and all our successes go to [www.eurotherm.com/success](http://www.eurotherm.com/success)

# Real-world applications

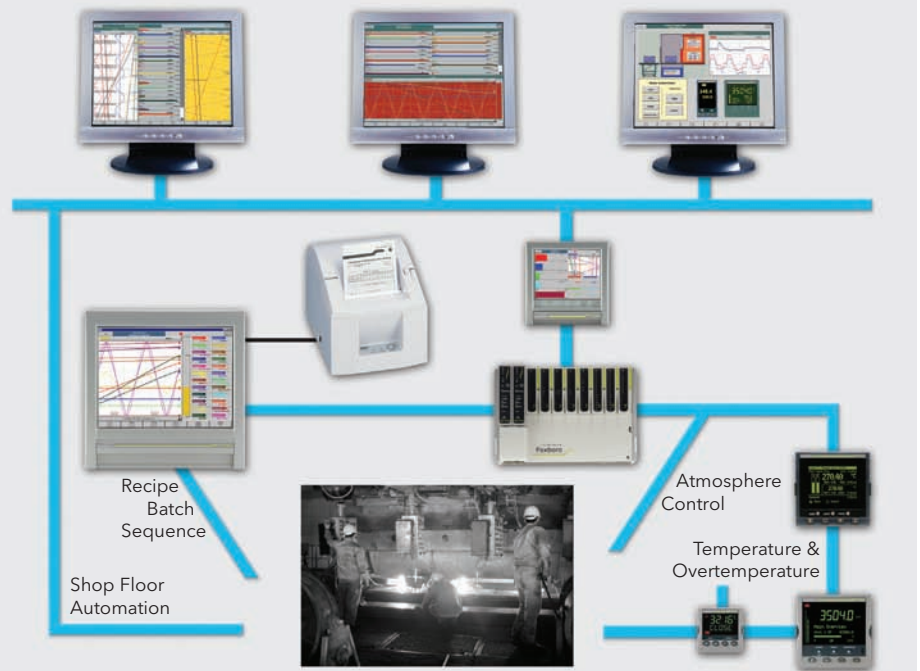
HMI functionality can be used to provide a total solution environment for secure recording and operator interface. Combining the adaptable features with ease of implementation, the 6000 Series is the first choice to provide this functionality.



## Batch

6000 Series has powerful batch functionality and, combined with its groups, can run up to 12 simultaneous batches. Batches can be started and stopped independently and actions (e.g. printing a report or driving a relay) triggered by the start or stop of a batch. Each batch has up to 10 fields to enter data about the batch. These can be stored or entered by the operator on batch start manually or using a USB bar code scanner. Start/Stop times Elapsed Time and Field1 of all batches can be seen in the Batch Summary view.

Using the groups and the batch functionality the 6000 can easily be configured to manage multiple batches or multiple zones within a machine.

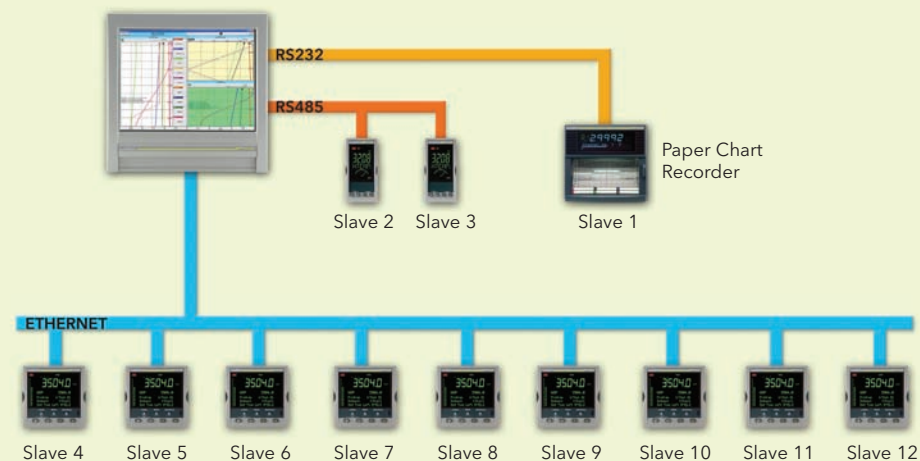


## Extended Input Capability

Each 6000 can communicate with up to 32 slave devices, providing up to 176 inputs. These process values can be divided between up to 12 different groups to provide sensible viewing and reporting of data.

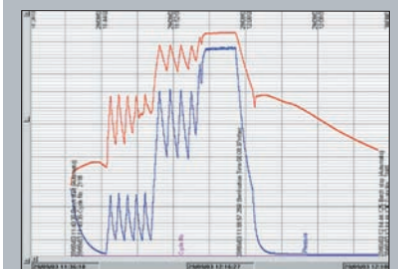
Slave devices could be used for:

- Additional data acquisition
- To provide operators remote access to legacy product data
- Combined recording and control functionality



## Sterilisation Process

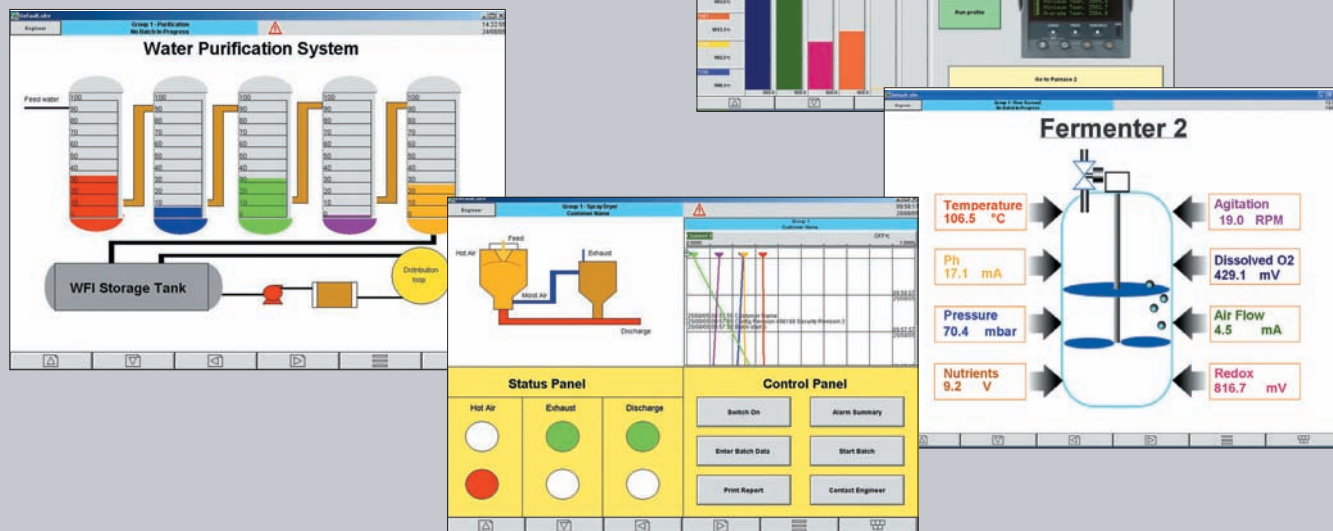
- Lethality (F0) calculation
- Automatic batch start on event
- Batch reporting
- Automatic, local, batch printing for 'dirty' side
- Configurable to indicate pass/fail
- Easy operator interface





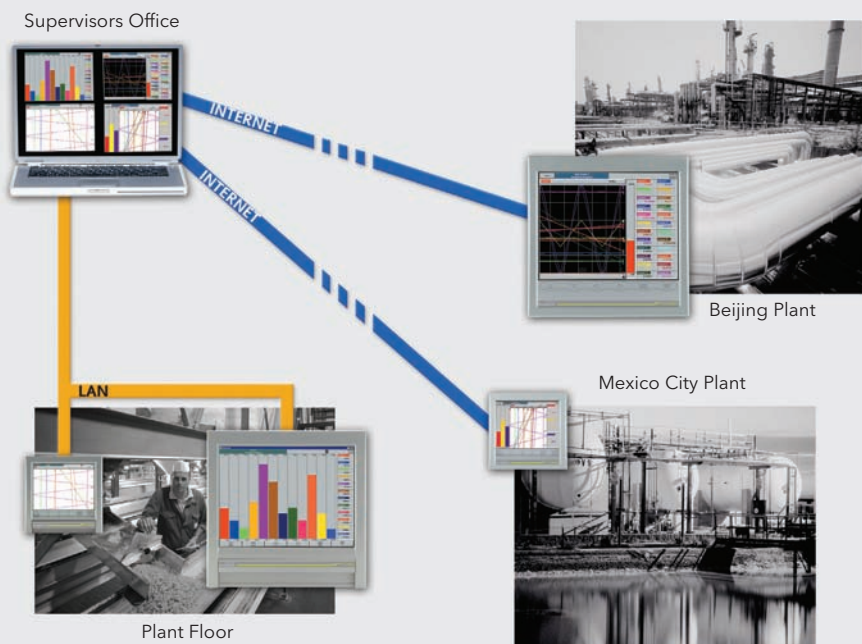
## User Defined Screens

Whatever the application, the operator interface can be simplified using the Screen Builder to easily produce customised displays showing the specific process. The operator can start/stop batches, download parameters (e.g. control setpoint) and enter notes to be included with process record. Screens can contain standard elements (e.g. a trend or bar graph) along with imported image files, basic shapes and buttons to drive events.



## Remote Monitoring

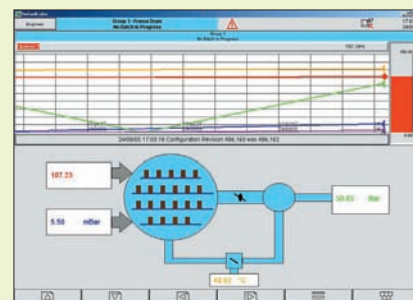
Bridge software gives the user complete access to the 6000 instrument from a PC anywhere in the world with access to the local network. Security is maintained using unique user names and passwords. Recorders can be situated in remote locations and accessed when required to monitor status, access recorded data or change configuration - potentially saving a costly site visit. Combined with Master Communications the 6000 could also provide information to other local devices that would previously be inaccessible over the network.



## Environmental and Stability Chamber Monitoring

Secure recording in accordance with 21 CFR Part 11, remote operation and viewing, standard maths equations and multiple alarm/event alert strategies make the 6000 ideal for environmental monitoring applications.

- Local logging capability
- Easy integration into multiple room system
- Mean Kinetic Temperature (MKT) equation
- Selectable stability testing period
- Selectable sampling frequency
- Sophisticated alarm functionality
- SMS or email alerts triggered by alarms or events



# Get your data in the way you need it ...

The 6000 itself provides great flexibility in its application and it is supported by a number of PC-based tools to get data to you in the way you need it.

## Bridge Software

Bridge software gives complete remote access to the recorders (both the 6000 Series and the 5000 Series). The software can be installed on any number of PCs and can connect to multiple recorders via a local network, dial-up connection or the Internet. Each 6000 instrument can have 10 concurrent, independent, remote users connected to it and viewing live data from the recorder. Ease of operator use is maintained as the displays and operation at the PC are the same as on the 6000 instruments. Data security is maintained with the use of specific user names and passwords.

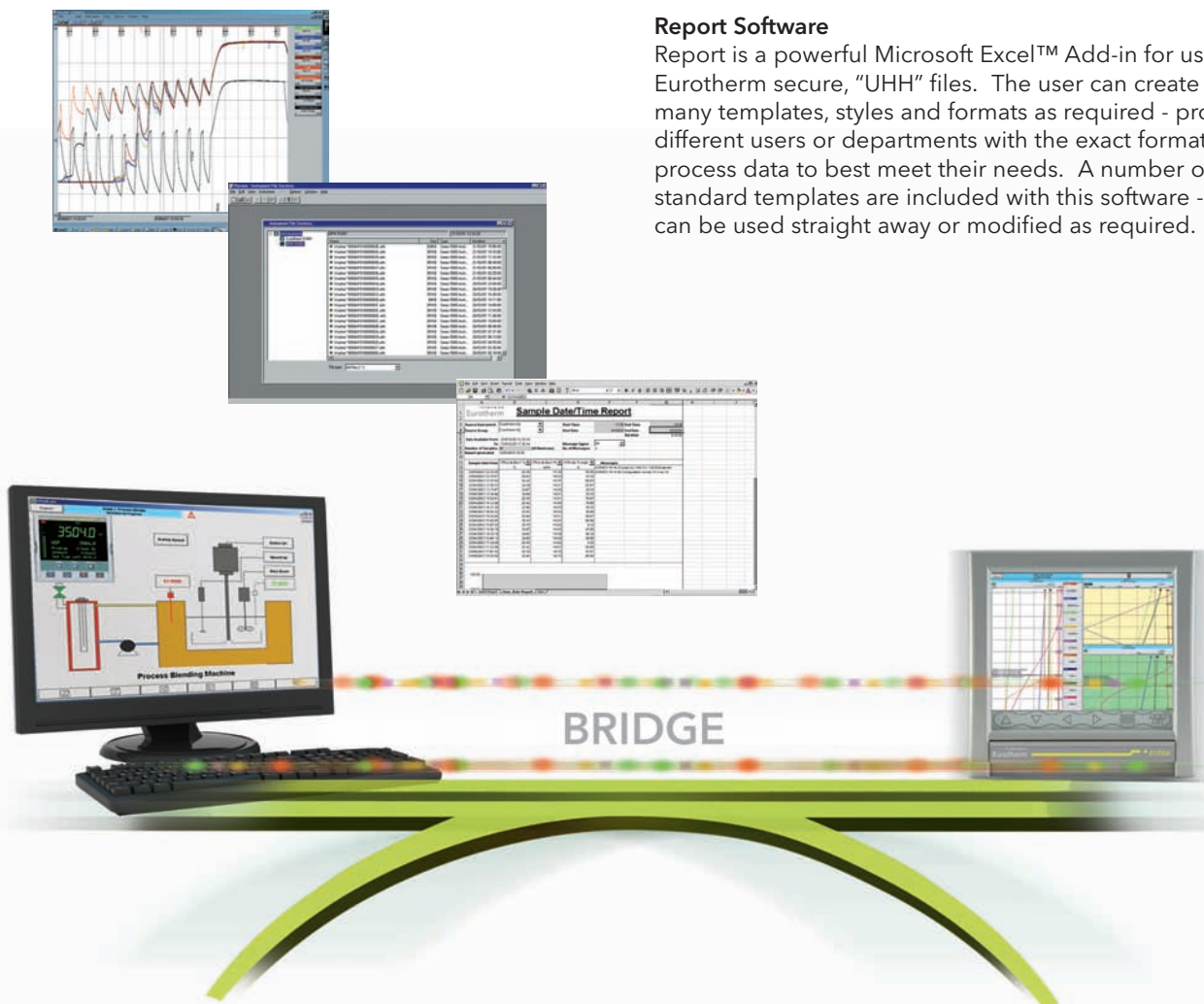
## Review and Review QuickChart

Review software acts as an efficient and secure library for data from which charts can be reviewed, printed and exported to other PC packages if required. Archive files from a 6000 are stored in an encrypted, binary, check summed format and Review uses this format to enable chart view on a PC - ensuring integrity of both historical and new data. Review can access data from the recorder via a local network, dial-up connection, the Internet or directly from the 6000's removable media. Its Archive Management will help you to maintain growing data archives and manage files effectively.

Review QuickChart provides a very quick and simple way of viewing historical data. It recreates the chart on the PC - the user can then add comments if they wish and re-save the chart, securing the comments. QuickChart files can be viewed independently of the recorded process data and, as such, can be simply emailed for viewing by other users.








## Report Software

Report is a powerful Microsoft Excel™ Add-in for use with Eurotherm secure, "UHH" files. The user can create as many templates, styles and formats as required - providing different users or departments with the exact format of the process data to best meet their needs. A number of standard templates are included with this software - these can be used straight away or modified as required.





## Selection guide

Paperless/Graphic	Paperless Graphic Recorders						5000 Series
							
Features	6100A	6180A	6100XIO	6180XIO	6180AeroDAQ	6100E	5000B
Inputs	18	48	none	none	48	6	12
Graphic Display	5.5"	12.1"	5.5"	12.1"	12.1"	5.5"	none
Protection	IP66	IP66	IP65	IP65	IP66	IP66	IP20
Relay Outputs	•	•	none	none	•	•	•
Annotation	•	•	•	•	•	•	•
Contact Inputs	•	•	none	none	•	none	•
Modbus	Master/Slave	Master/Slave	Master/Slave	Master/Slave	Master/Slave	Slave	Master/Slave
Mathematics	•	•	•	•	•	•	•
Counters	•	•	•	•	•	•	•
Timers	•	•	•	•	•	•	•
Totalisers	•	•	•	•	•	•	•
PC Configuration	•	•	•	•	•	•	•
Ethernet/FTP	•	•	•	•	•	•	•
Auditor Features	•	•	•	•	•	none	•
Batch	•	•	•	•	•	none	•
Custom Screens	•	•	•	•	•	none	•
Remote Viewing	•	•	•	•	•	•	•
Recording Speed	8Hz	8Hz	8Hz	8Hz	8Hz	1Hz	8Hz
Trend Speed	8Hz	8Hz	8Hz	8Hz	8Hz	1Hz	none
Network Addressing	DHCP, Boot P Fixed IP	DHCP, Boot P Fixed IP	DHCP, Boot P Fixed IP	DHCP, Boot P Fixed IP	DHCP, Boot P Fixed IP	DHCP, Boot P Fixed IP	Boot P Fixed IP
USB	3	3	1	1	3	1	none
Reports	10	10	10	10	10	none	10
Groups	12	12	12	12	12	1	6
Review of History (on screen)	•	•	•	•	•	•	none
AMS2750D	none	none	none	none	•	none	none



# Eurotherm:

## International sales and service



www.eurotherm.com

**AUSTRALIA** Melbourne  
Invensys Process Systems  
Australia Pty. Ltd.  
**T** (+61 0) 8562 9800  
**F** (+61 0) 8562 9801  
**E** info.eurotherm.au@invensys.com

**AUSTRIA** Vienna  
Eurotherm GmbH  
**T** (+43 1) 7987601  
**F** (+43 1) 7987605  
**E** info.eurotherm.at@invensys.com

**BELGIUM & LUXEMBOURG**  
Moha  
Eurotherm S.A./N.V.  
**T** (+32) 85 274080  
**F** (+32) 85 274081  
**E** info.eurotherm.be@invensys.com

**BRAZIL** Campinas-SP  
Eurotherm Ltda.  
**T** (+5519) 3707 5333  
**F** (+5519) 3707 5345  
**E** info.eurotherm.br@invensys.com

**CHINA**  
Eurotherm China  
**T** (+86 21) 61451188  
**F** (+86 21) 61452602  
**E** info.eurotherm.cn@invensys.com

Beijing Office  
**T** (+86 10) 5909 5700  
**F** (+86 10) 5909 5709/10  
**E** info.eurotherm.cn@invensys.com

**FRANCE** Lyon  
Eurotherm Automation SA  
**T** (+33 478) 664500  
**F** (+33 478) 352490  
**E** info.eurotherm.fr@invensys.com

**GERMANY** Limburg  
Eurotherm Deutschland GmbH  
**T** (+49 6431) 2980  
**F** (+49 6431) 298119  
**E** info.eurotherm.de@invensys.com

**INDIA** Mumbai  
Invensys India Pvt. Ltd.  
**T** (+91 22) 67579800  
**F** (+91 22) 67579999  
**E** info.eurotherm.in@invensys.com

**IRELAND** Dublin  
Eurotherm Ireland Limited  
**T** (+353 1) 4691800  
**F** (+353 1) 4691300  
**E** info.eurotherm.ie@invensys.com

**ITALY** Como  
Eurotherm S.r.l.  
**T** (+39 031) 975111  
**F** (+39 031) 977512  
**E** info.eurotherm.it@invensys.com

**KOREA** Seoul  
Invensys Operations Management  
Korea  
**T** (+82 2) 2090 0900  
**F** (+82 2) 2090 0800  
**E** info.eurotherm.kr@invensys.com

**NETHERLANDS** Alphen a/d Rijn  
Eurotherm B.V.  
**T** (+31 172) 411752  
**F** (+31 172) 417260  
**E** info.eurotherm.nl@invensys.com

**POLAND** Katowice  
Invensys Eurotherm Sp z o.o.  
**T** (+48 32) 7839500  
**F** (+48 32) 7843608/7843609  
**E** info.eurotherm.pl@invensys.com

**SPAIN** Madrid  
Eurotherm España SA  
**T** (+34 91) 6616001  
**F** (+34 91) 6619093  
**E** info.eurotherm.es@invensys.com

**SWEDEN** Malmo  
Eurotherm AB  
**T** (+46 40) 384500  
**F** (+46 40) 384545  
**E** info.eurotherm.se@invensys.com

**SWITZERLAND** Wollerau  
Eurotherm Produkte (Schweiz) AG  
**T** (+41 44) 7871040  
**F** (+41 44) 7871044  
**E** info.eurotherm.ch@invensys.com

**UNITED KINGDOM** Worthing  
Eurotherm Limited  
**T** (+44 1903) 268500  
**F** (+44 1903) 265982  
**E** info.eurotherm.uk@invensys.com

**U.S.A.** Ashburn VA  
Invensys Eurotherm  
**T** (+1 703) 724 7300  
**F** (+1 703) 724 7301  
**E** info.eurotherm.us@invensys.com

ED64

Eurotherm is also represented in the following countries:

Afghanistan	Latvia
Albania	Lesotho
Algeria	Libya
Angola	Lithuania
Argentina	Macedonia
Armenia	Madagascar
Azerbaijan	Malaysia
Bahrain	Malta
Bangladesh	Micronesia
Barbados	Moldova
Belarus	Morocco
Bermuda	Mozambique
Bolivia	Myanmar
Bosnia and Herzegovina	Namibia
Botswana	Nicaragua
Brazil	Niger
Brunei Darussalam	Nigeria
Bulgaria	Norway
Cambodia	Oman
Cameroon	Pakistan
Canada	Palestinian Territory
Central African Republic	Papua New Guinea
Chad	Paraguay
Chile	Peru
Colombia	Philippines
Congo	Poland
Costa Rica	Qatar
Côte d'Ivoire	Romania
Croatia	Russia
Cyprus	Rwanda
Czech Republic	Saudi Arabia
Denmark	Senegal
Djibouti	Serbia and Montenegro
Ecuador	Sierra Leone
Egypt	Singapore
El Salvador	Slovakia
Eritrea	Slovenia
Estonia	Somalia
Ethiopia	South Africa
Fiji	Sri Lanka
Finland	Sudan
Georgia	Swaziland
Ghana	Syria
Greece	Tajikistan
Greenland	Tanzania
Guinea	Thailand
Hungary	The Gambia
Iceland	Tunisia
Indonesia	Turkey
Iraq	Turkmenistan
Israel	Uganda
Jamaica	Ukraine
Japan	United Arab Emirates
Jordan	Uruguay
Kazakhstan	Uzbekistan
Kenya	Venezuela
Kuwait	Vietnam
Kyrgyzstan	Yemen
Laos	Zambia
	Zimbabwe

Represented by:

© Copyright Eurotherm Limited 2011

Invensys, Eurotherm, the Eurotherm logo, Chessell, EurothermSuite, Mini8, Eycon, Eyriss, EPower, nanodac, Foxboro and Wonderware are trademarks of Invensys plc, its subsidiaries and affiliates. All other brands may be trademarks of their respective owners.

All rights are strictly reserved. No part of this document may be reproduced, modified, or transmitted in any form by any means, nor may it be stored in a retrieval system other than for the purpose to act as an aid in operating the equipment to which the document relates, without the prior written permission of Eurotherm Limited.

Eurotherm Limited pursues a policy of continuous development and product improvement. The specifications in this document may therefore be changed without notice. The information in this document is given in good faith, but is intended for guidance only.

Eurotherm Limited will accept no responsibility for any losses arising from errors in this document.



inven.s.y.s.  
Operations Management